



---

HARBOR  
BOAT

---



HARBORPOINT

## MASTER PLAN: PROPOSED SITE PLAN



AYERS  
SAINT  
GROSS

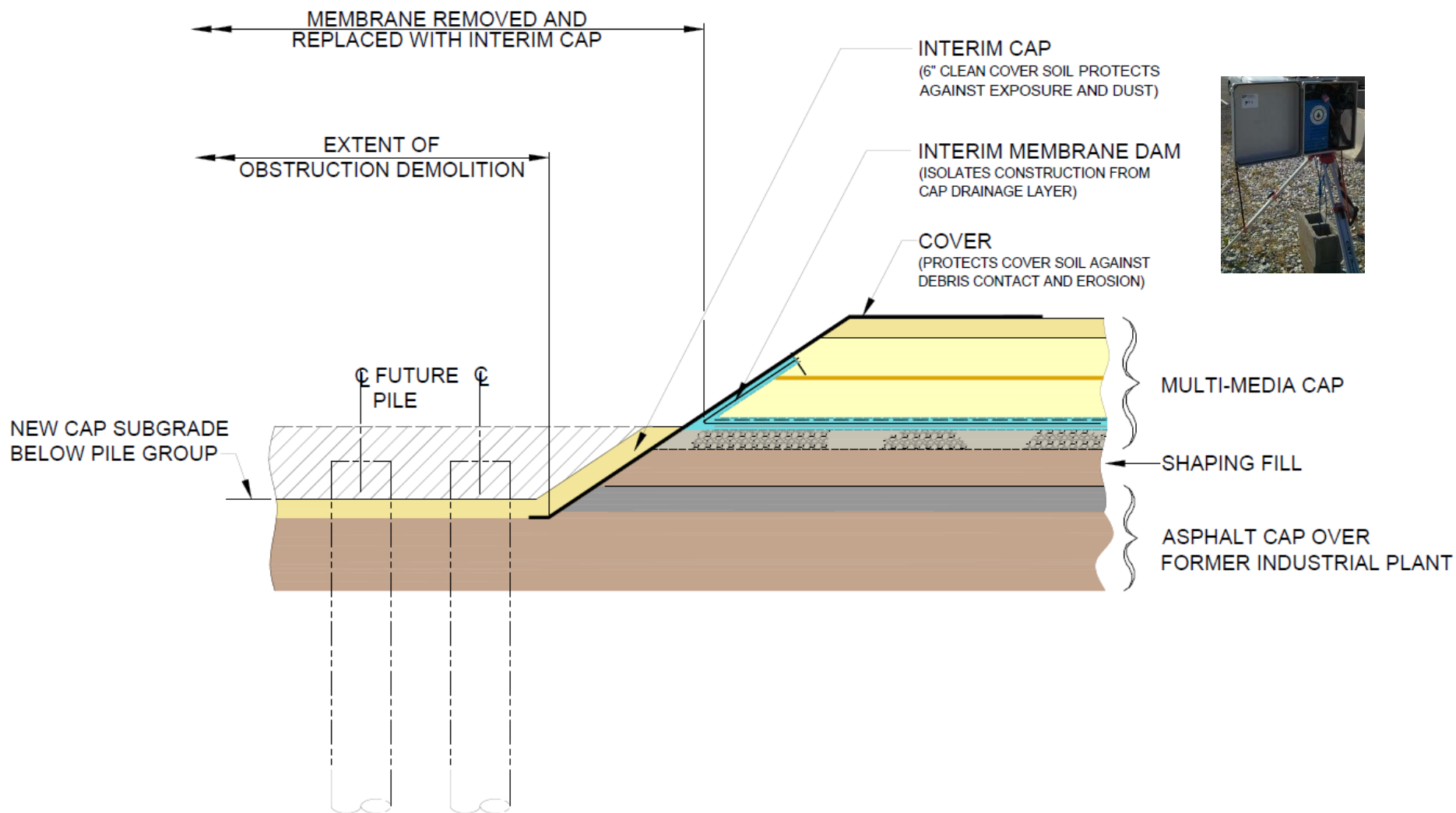
AUGUST 2012



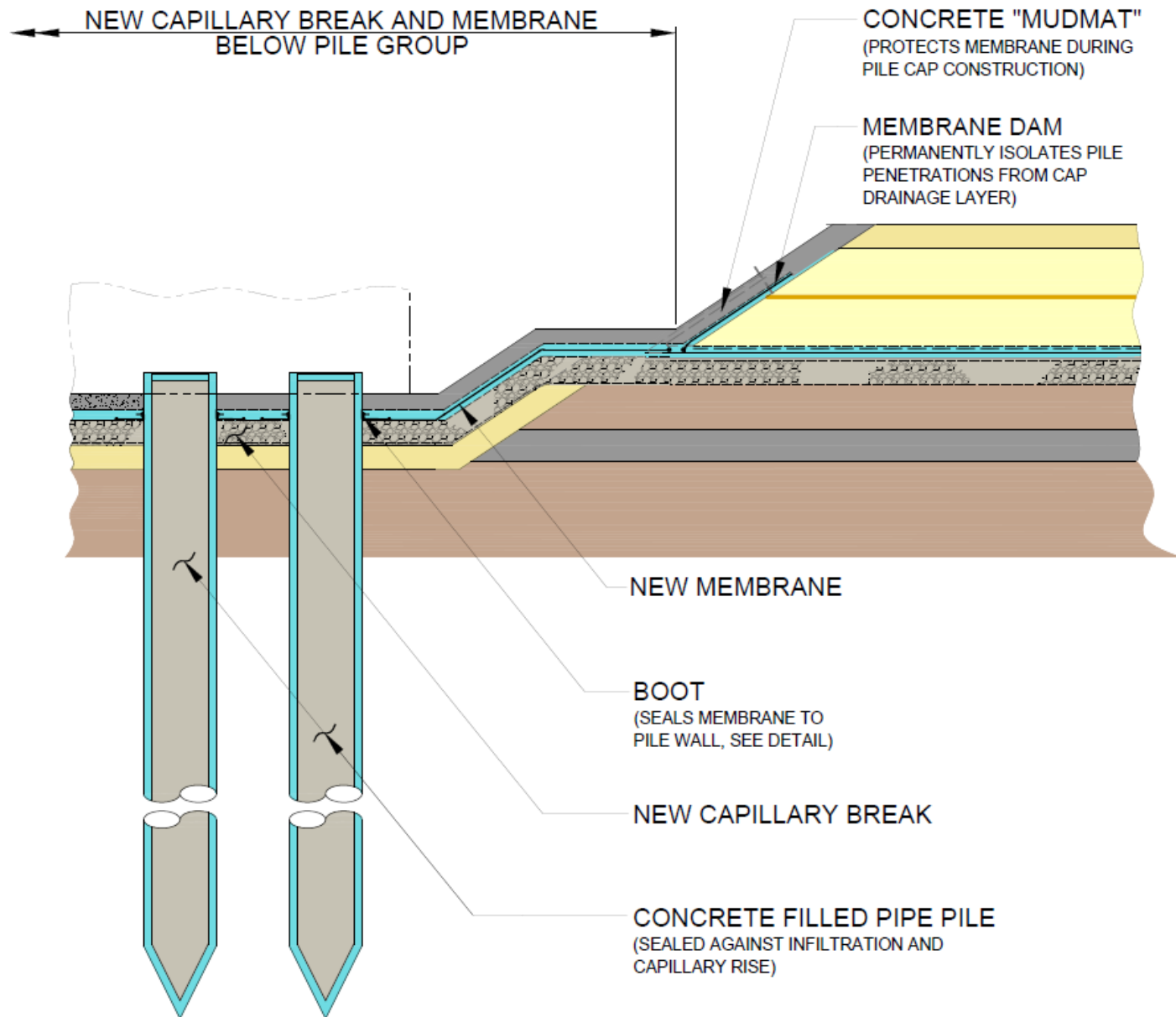


# PILE GROUP (TOWER)

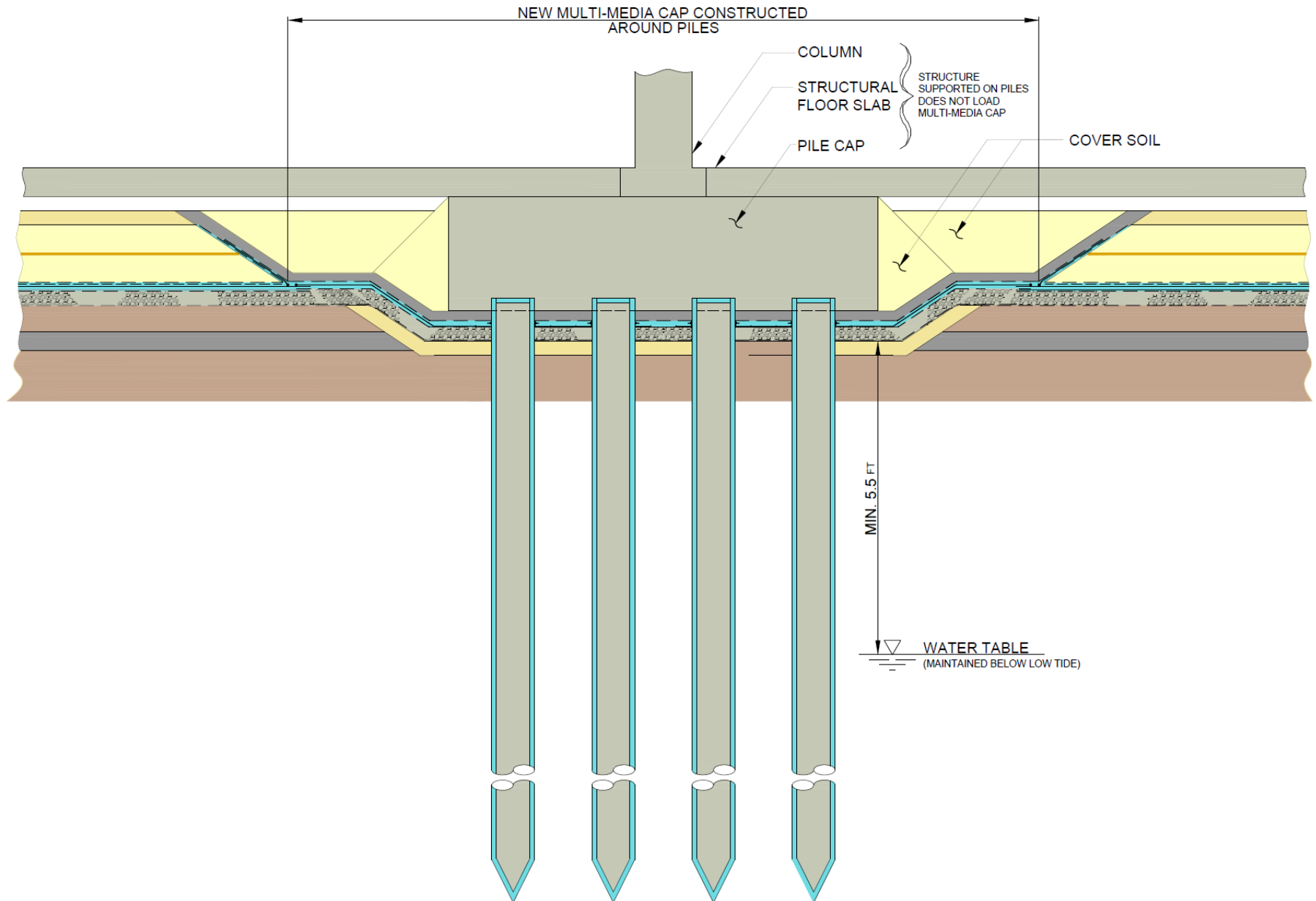
## MULTI-MEDIA CAP PENETRATION



# RESTORATION OF CAP BELOW PILE GROUP

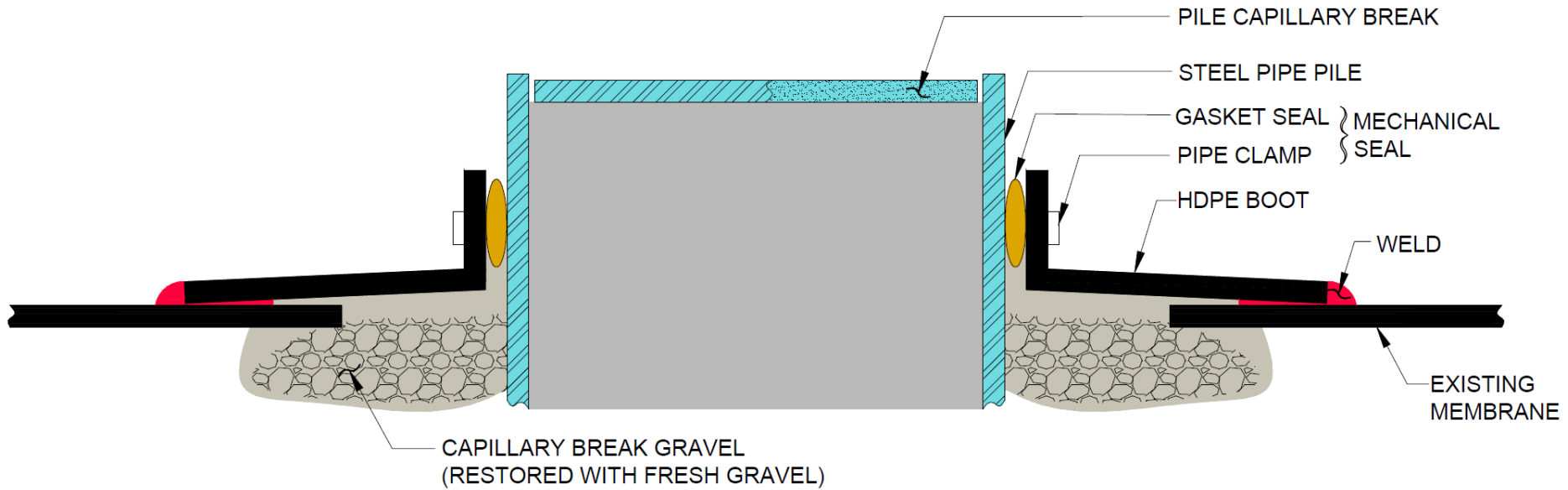


# COMPLETED FOUNDATION



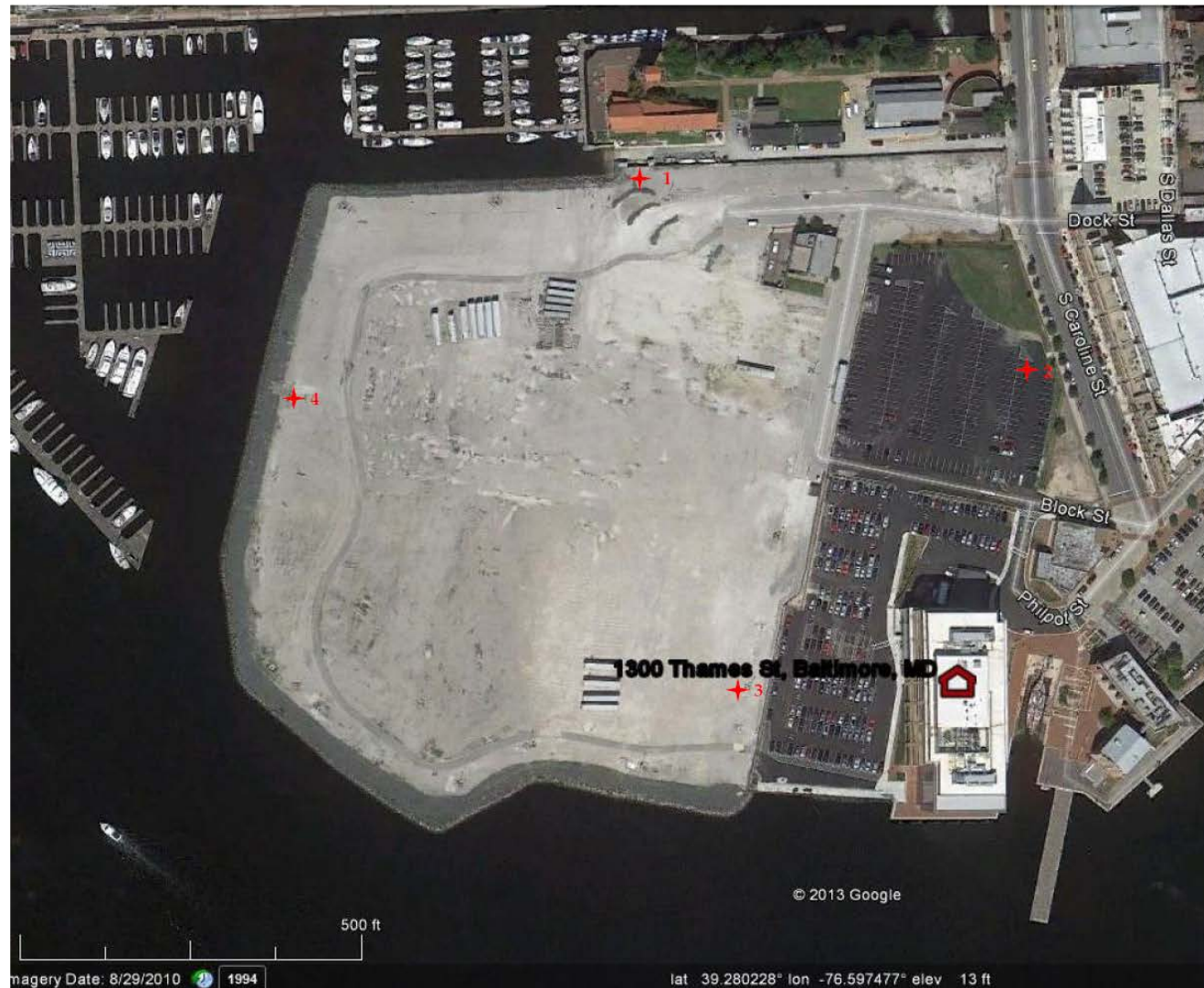
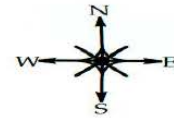
# PILE BOOT DETAIL

(BOOT SEALS MEMBRANE TO PILE WALL)





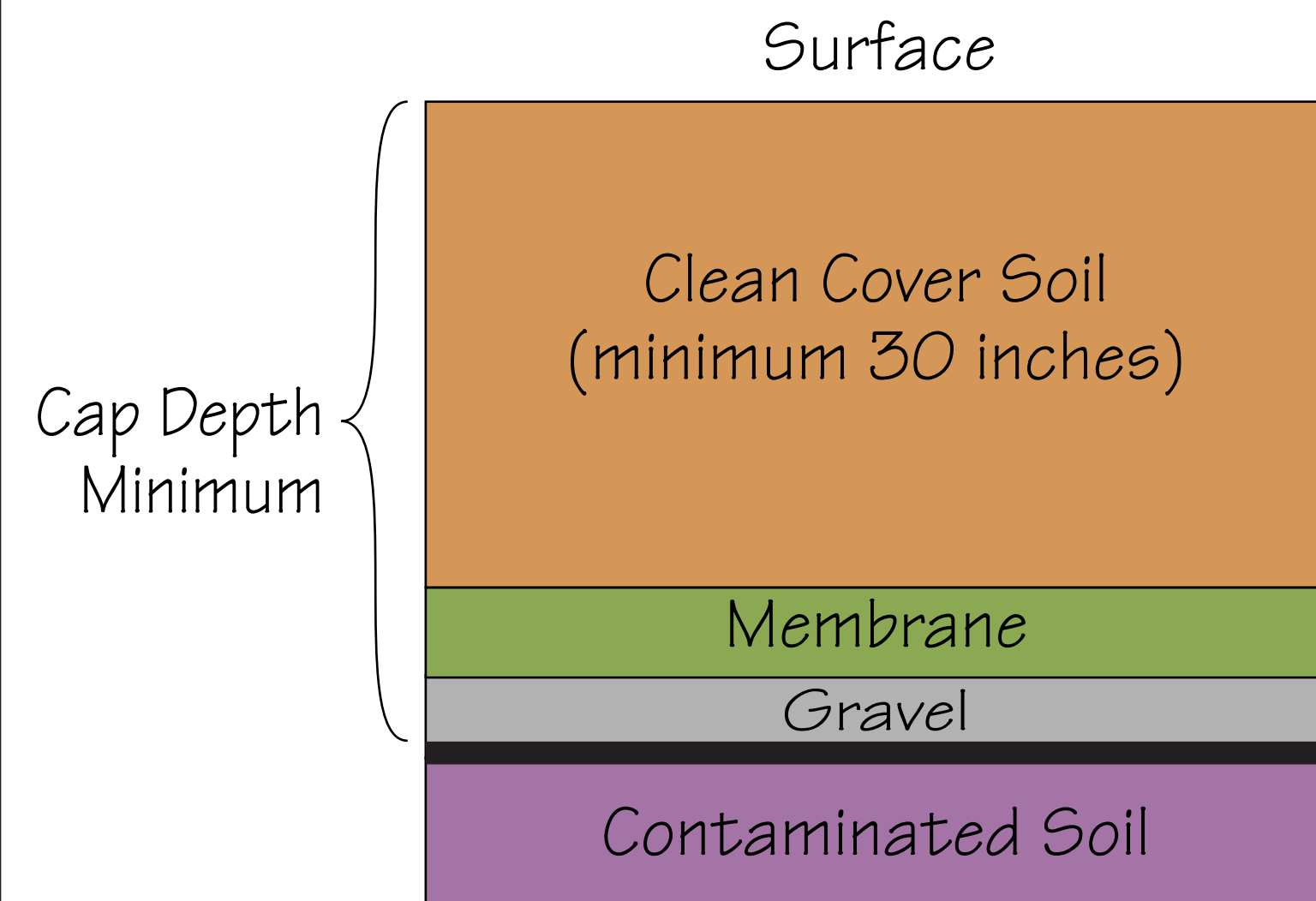
**Figure 2**  
**Perimeter Construction Monitoring Locations**  
**Harbor Point**  
**Baltimore, Maryland**



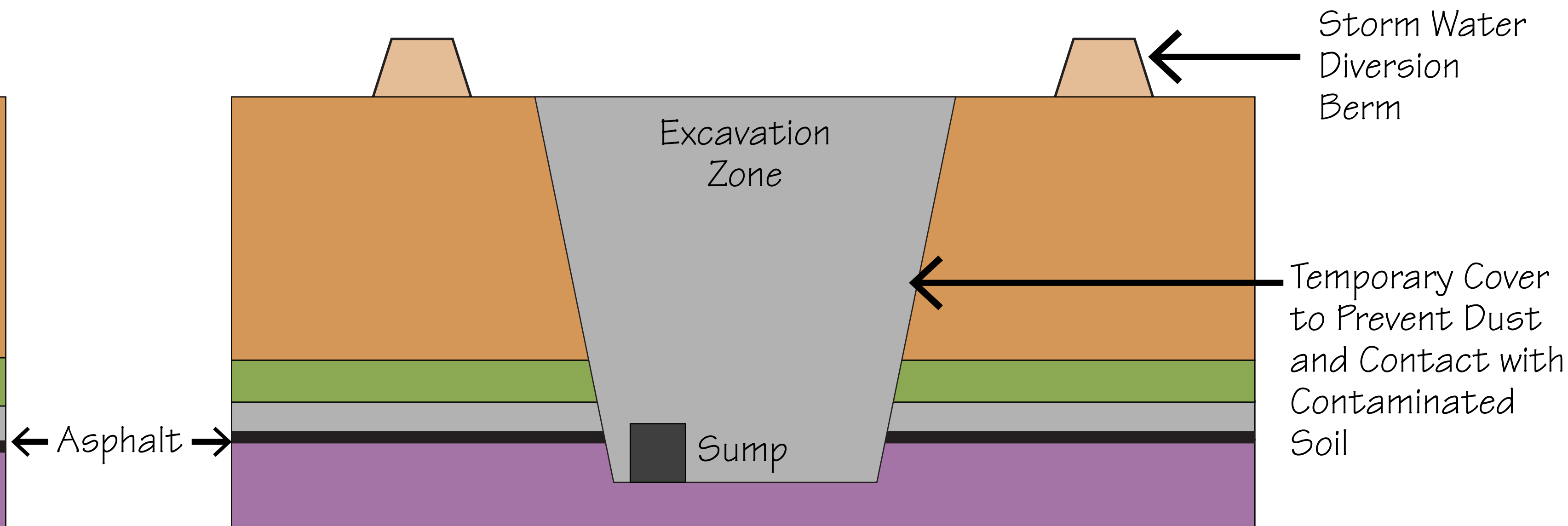


# Dust and Air Management

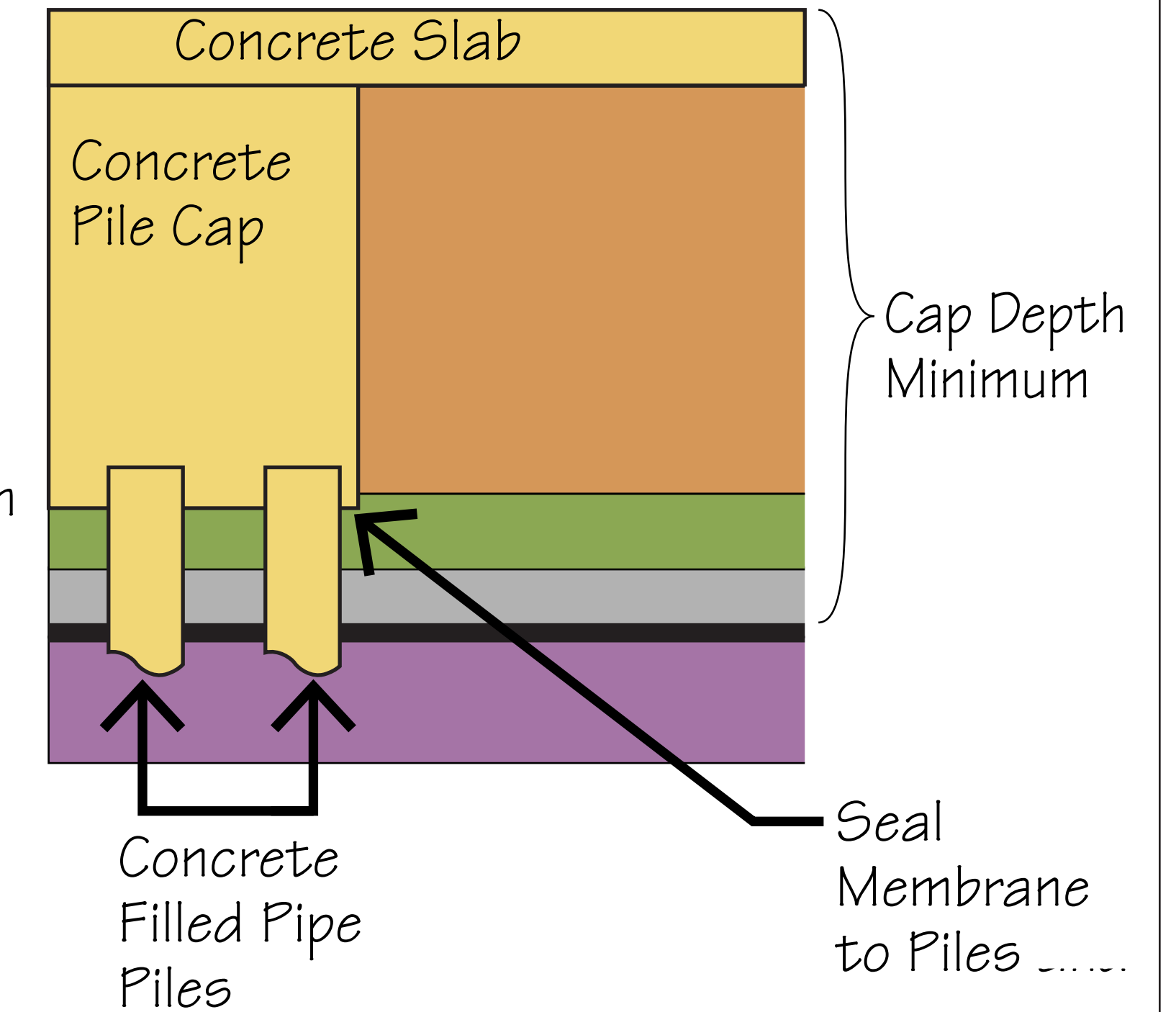
Cap Before Construction



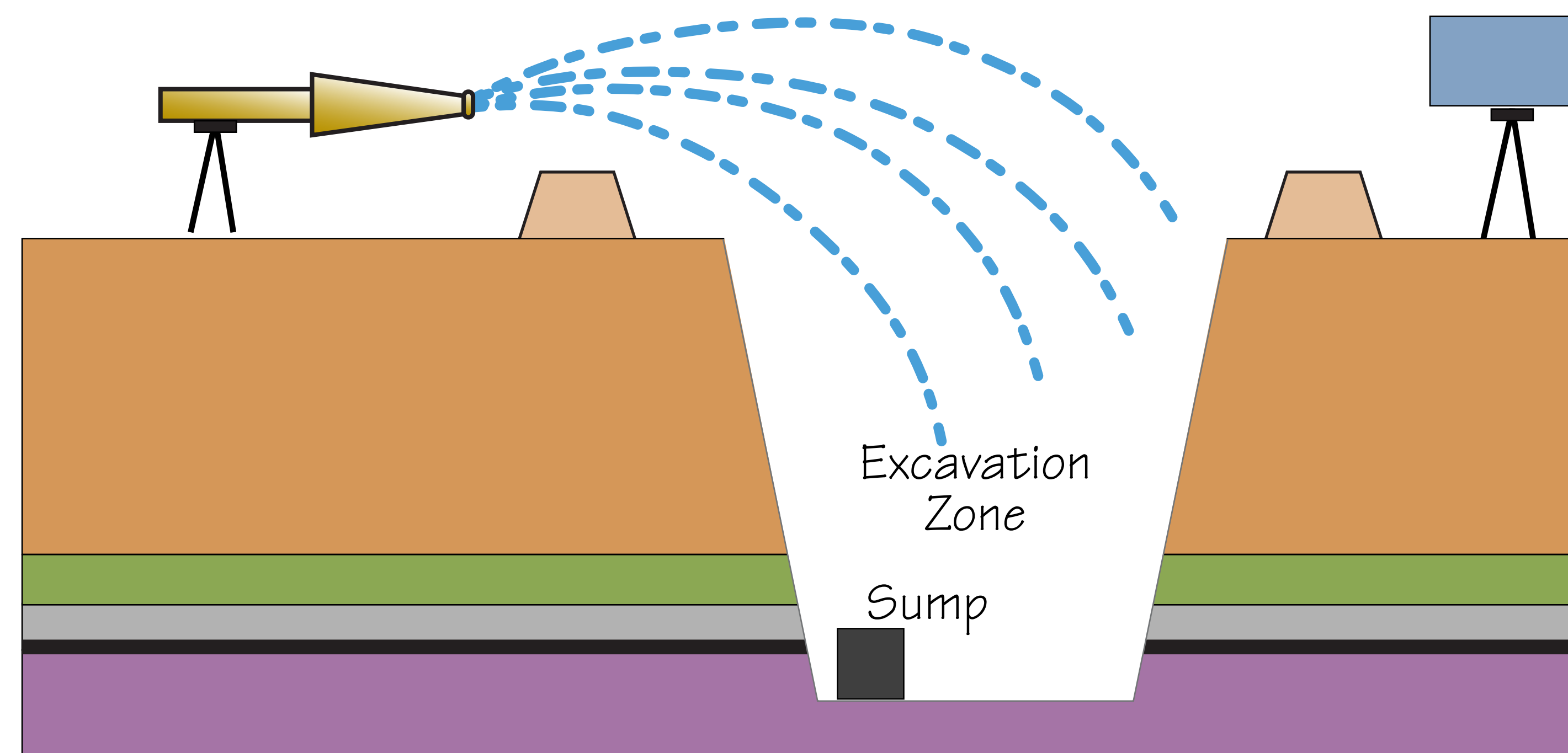
Cap During Construction



Cap After Construction



Water Spray for Dust Suppression



Air Monitoring Station



\*



Samples



Lab Testing

\* There will be multiple air monitoring stations along the site perimeter and work zone during construction.



---

HARBOR  
BOINT

---